

**DEPARTMENT OF PUBLIC SAFETY**  
**INDIANAPOLIS METROPOLITAN POLICE DEPARTMENT**

Criminal Homicide Analysis  
January 1 – May 11, 2014

Prepared by IMPD, Crime Analysis Section  
May 12, 2014

Data Source: HomiStat.mdb

\*Criminal Homicides included in data are before UCR classification and the number could change pending UCR review.

# Quick Facts: January 1- May 11, 2014

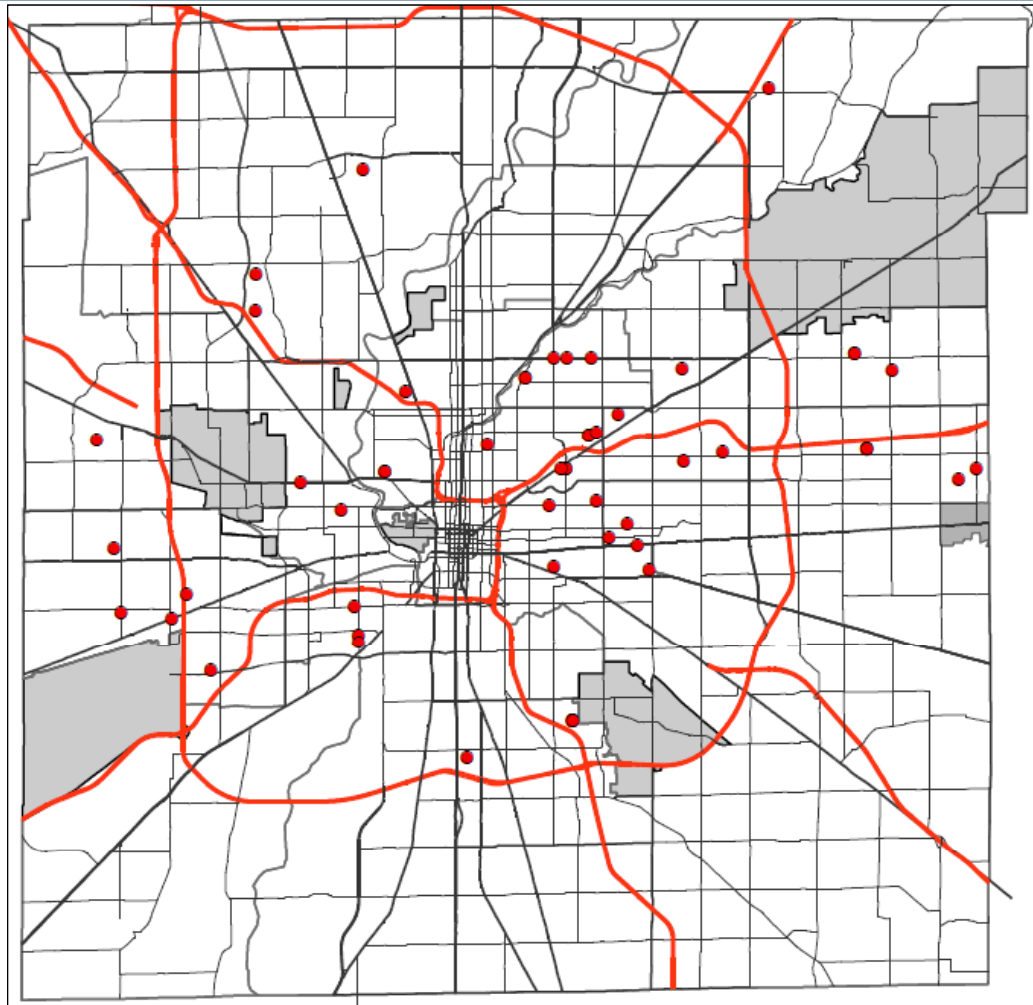
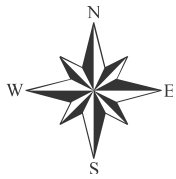
## Murder Cases

- Of the 54 murder victims, local adult criminal histories were found for 43 (80%) of the victims. These 43 people accounted for 180 adult felony arrests. Where criminal histories were found:
  - 21 (49%) had a previous weapons arrest
  - 29 (67%) had a previous drug arrest
  - 26 (60%) had a previous crimes against persons arrest
- Of the 42 suspects where a name was known, prior local adult criminal histories were found for 37 (88%) of the subjects. These 37 people accounted for 113 adult felony arrests:
  - 14 (38%) had a previous weapons arrest
  - 10 (31%) had a previous drug arrest
  - 25 (78%) had a previous crimes against persons arrest
- There have been two juvenile victims. **We've also had six suspects under the age of 18.**
- The racial relationship between victims and their suspects was:
  - Black victim – Black assailant = 13
  - White victim – Black assailant = 6
  - Black victim – White assailant = 0
  - White victim – White assailant = 15
  - Hispanic victim – Hispanic assailant = 0
  - White victim – Hispanic assailant = 1
  - Asian victim – Asian assailant = 0
  - Asian victim – Black assailant = 1
  - Indian victim – Unknown assailant = 0
  - Black victim – Unknown assailant = 19
  - Hispanic victim – Unknown assailant = 1
  - White victim- Unknown assailant = 5
- 14 (26%) of the 38 murders were known to have been motivated by drugs
- 13 of the victims of known drug-related murders died as the result of gunshot wounds

\*There is not a 1-1 relationship between victims and suspects: Some cases report more than 1 suspect; others have no known suspects

# January 1 – May 11, 2014

## MAP OF INCIDENT LOCATION



0 0.5 1 Miles

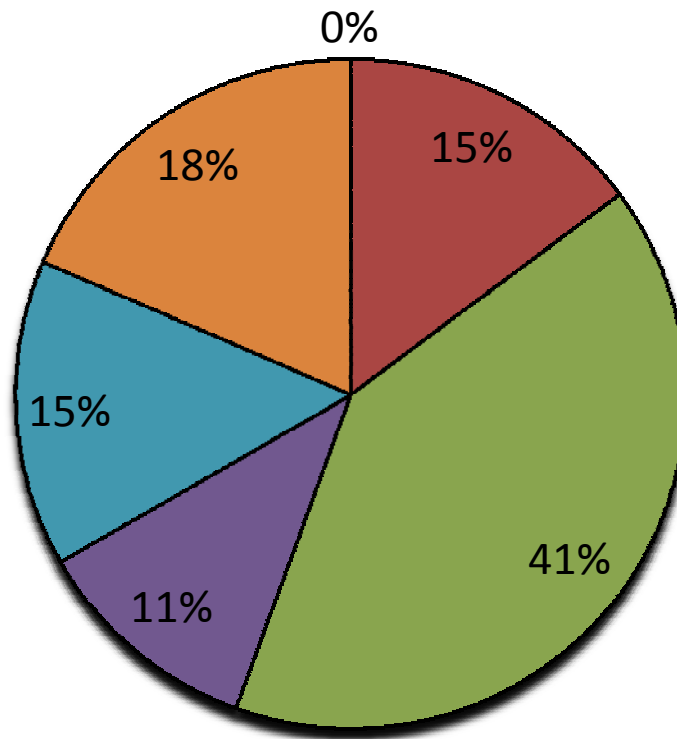
● CRIMINAL HOMICIDE

Data Source: HomiStat.mdb

\*Criminal Homicides included in data are before UCR classification and the number could change pending UCR review.

January 1 – May 11, 2014

DISTRIBUTION BY DISTRICT



■ Downtown- 0

■ North- 8

■ East- 22

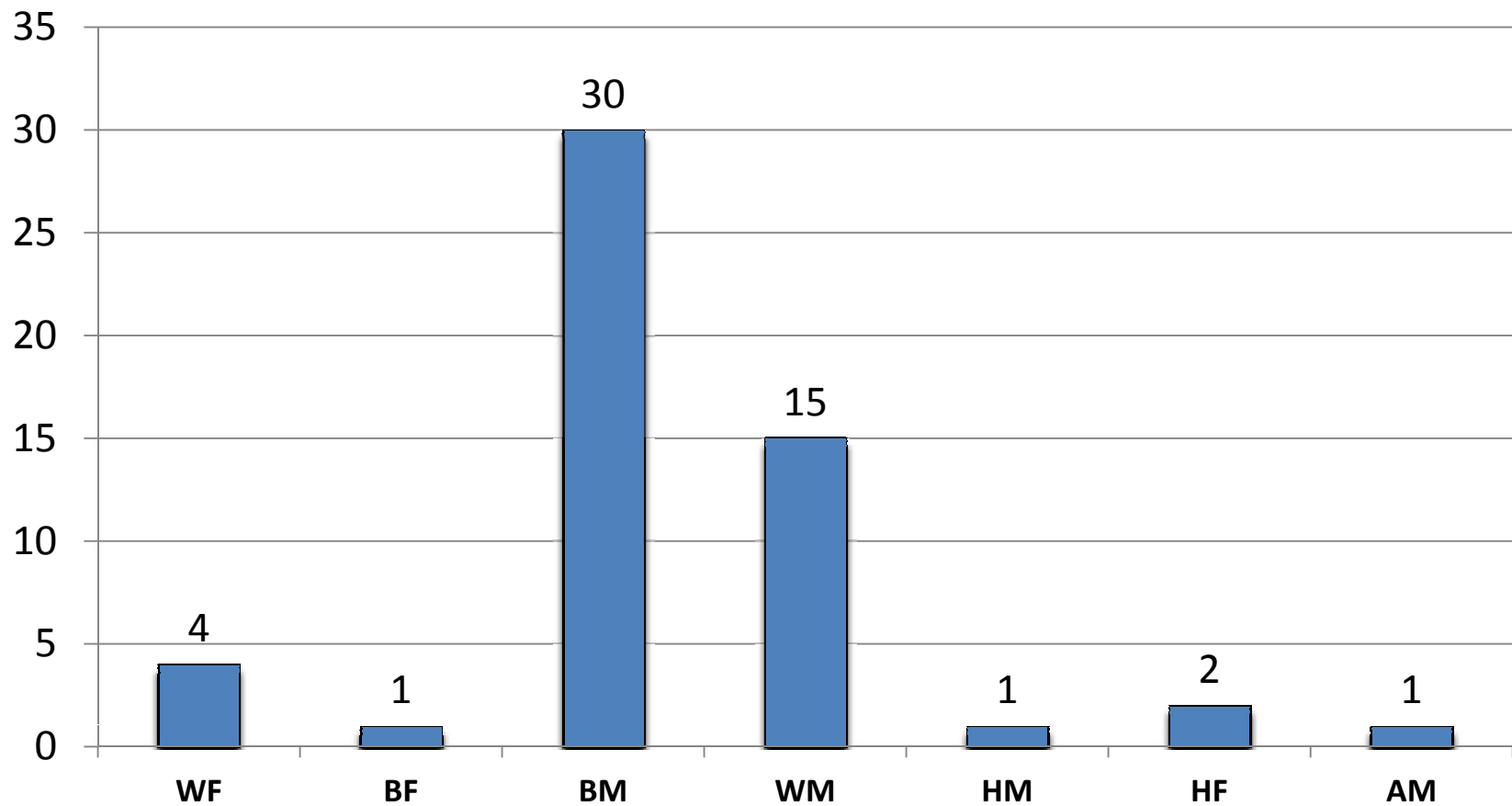
■ Northwest- 6

■ Southeast- 8

■ Southwest- 10

January 1 – May 11, 2014

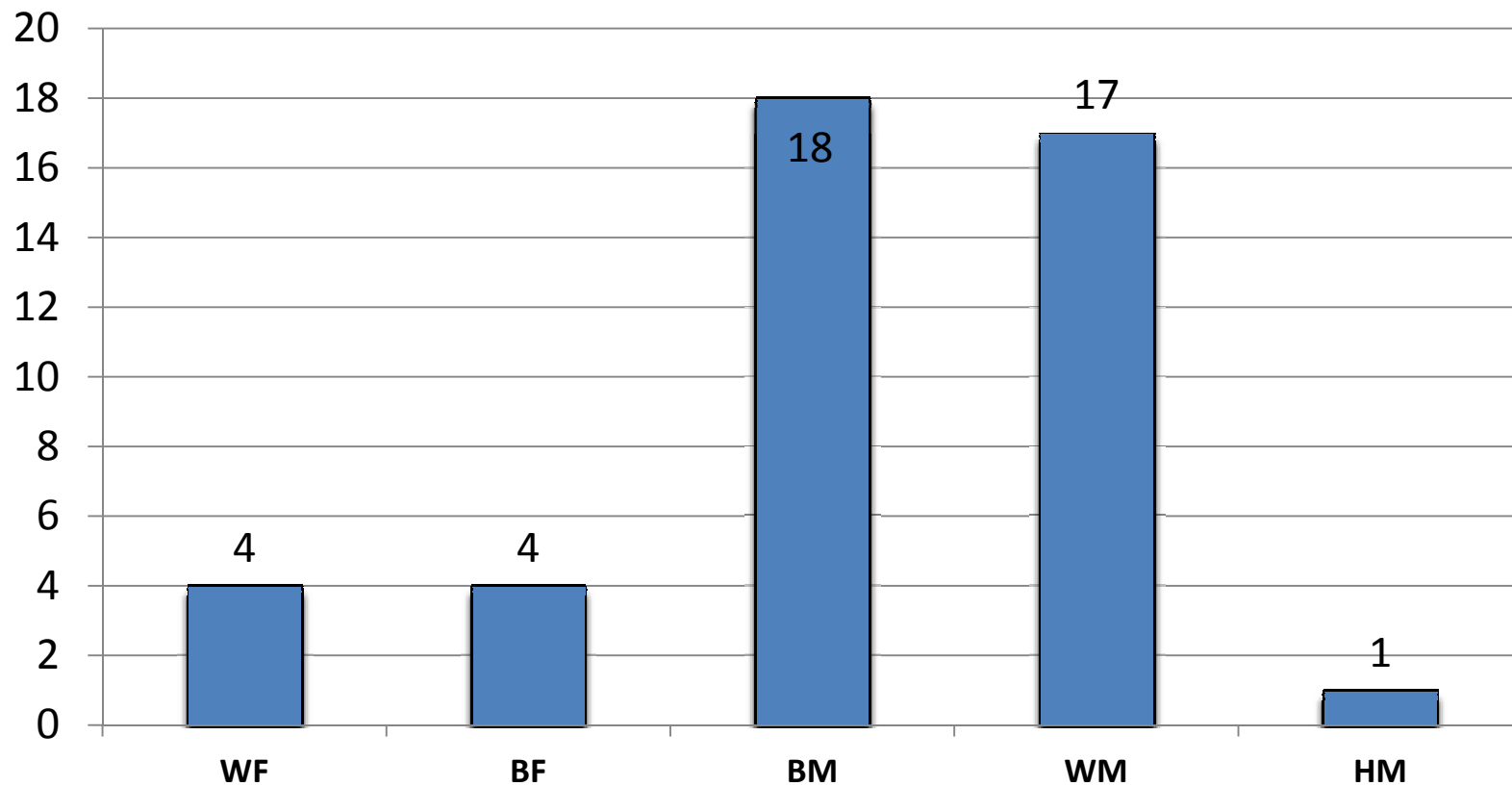
## VICTIM RACE/ETHNICITY AND GENDER



There is not a 1-1 relationship between victims and suspects: Some cases report more than 1 victim.

January 1 – May 11, 2014

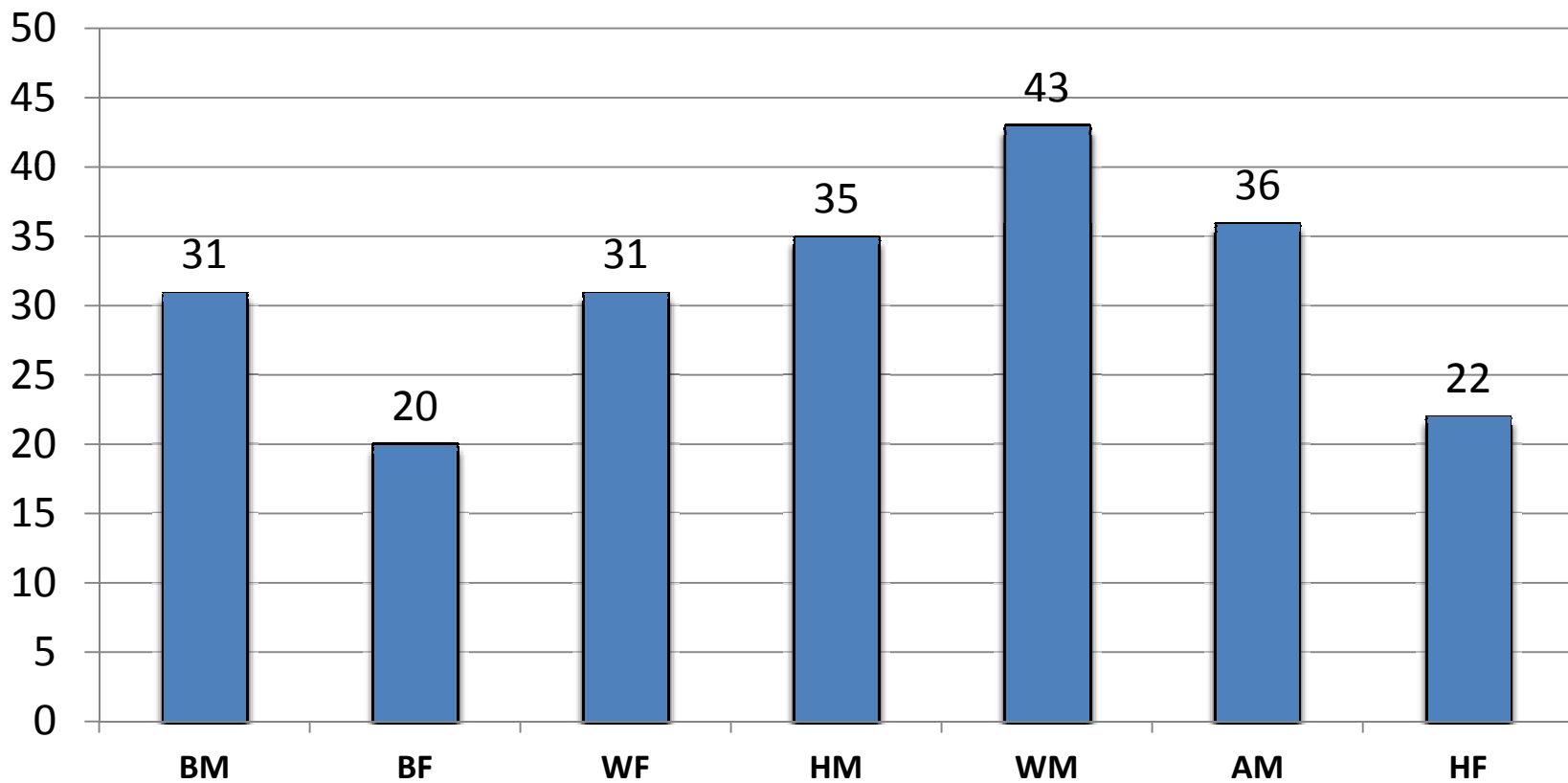
## SUSPECT RACE/ETHNICITY AND GENDER



There is not a 1-1 relationship between victims and suspects: Some cases report more than 1 suspect; others have no known suspects.

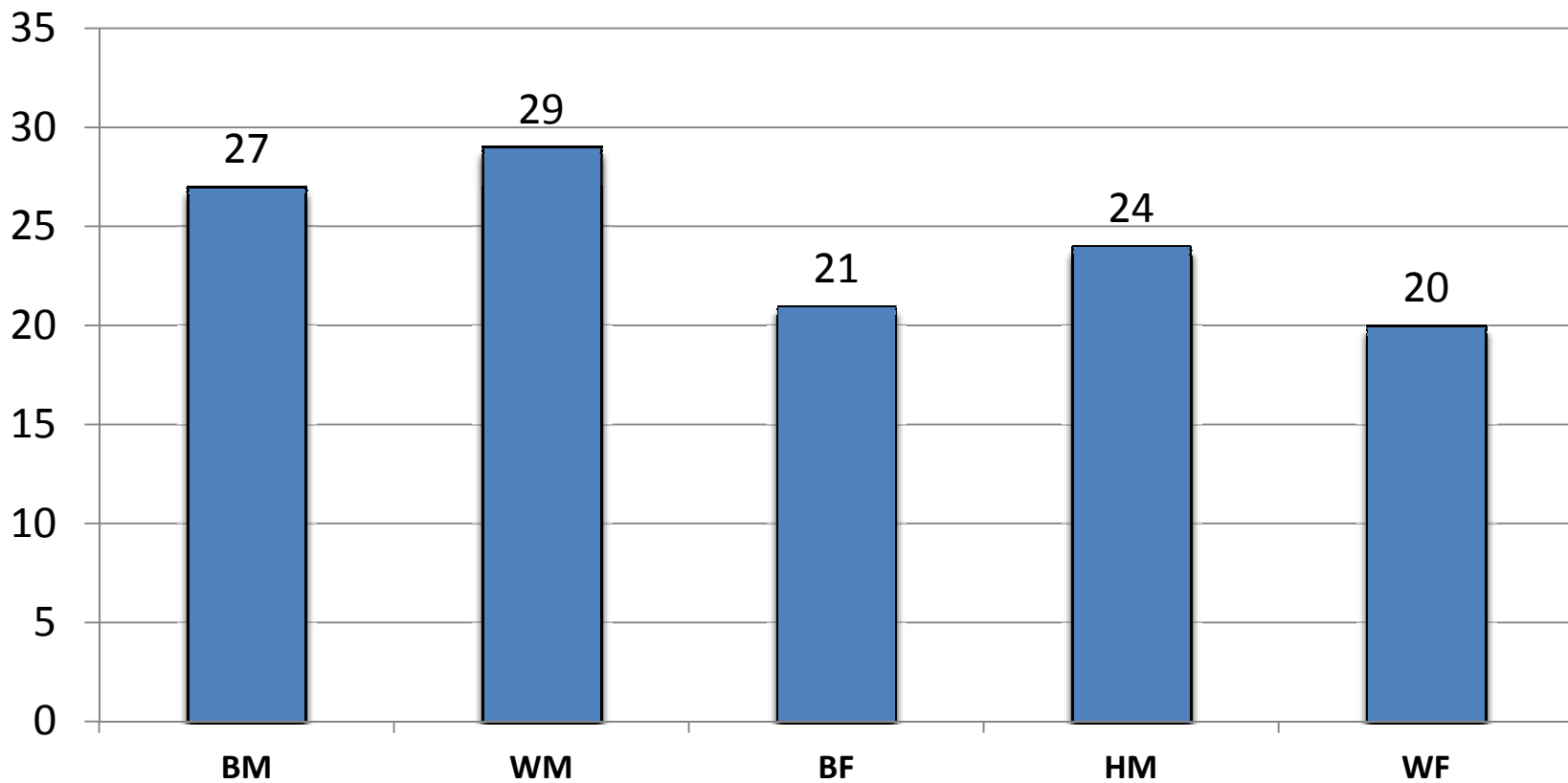
January 1 – May 11, 2014

**AVERAGE VICTIM AGE BY RACE/ETHNICITY AND GENDER**



January 1 – May 11, 2014

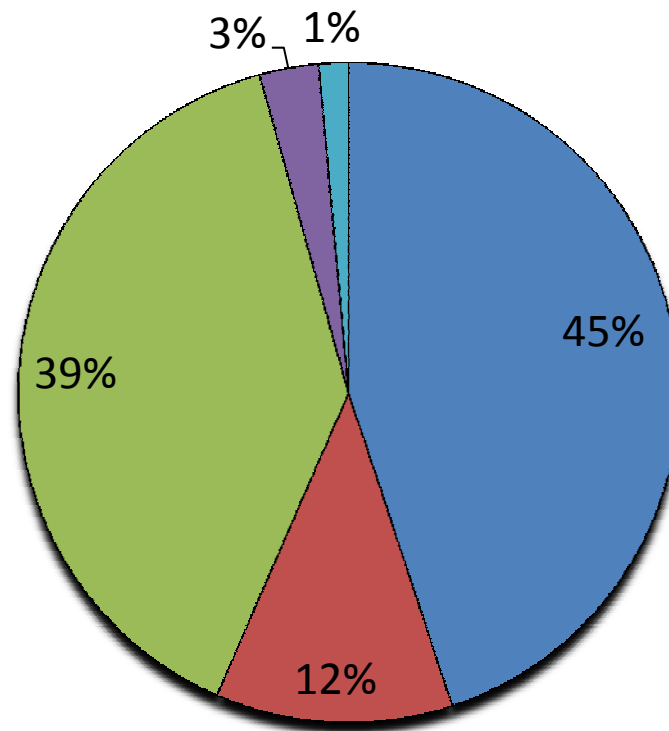
**AVERAGE SUSPECT AGE BY RACE/ETHNICITY AND GENDER**





January 1 – May 11, 2014

VICTIM - SUSPECT RELATIONSHIP



■ Acquaintance/Friend- 31

■ Stranger - 8

■ Unknown - 27

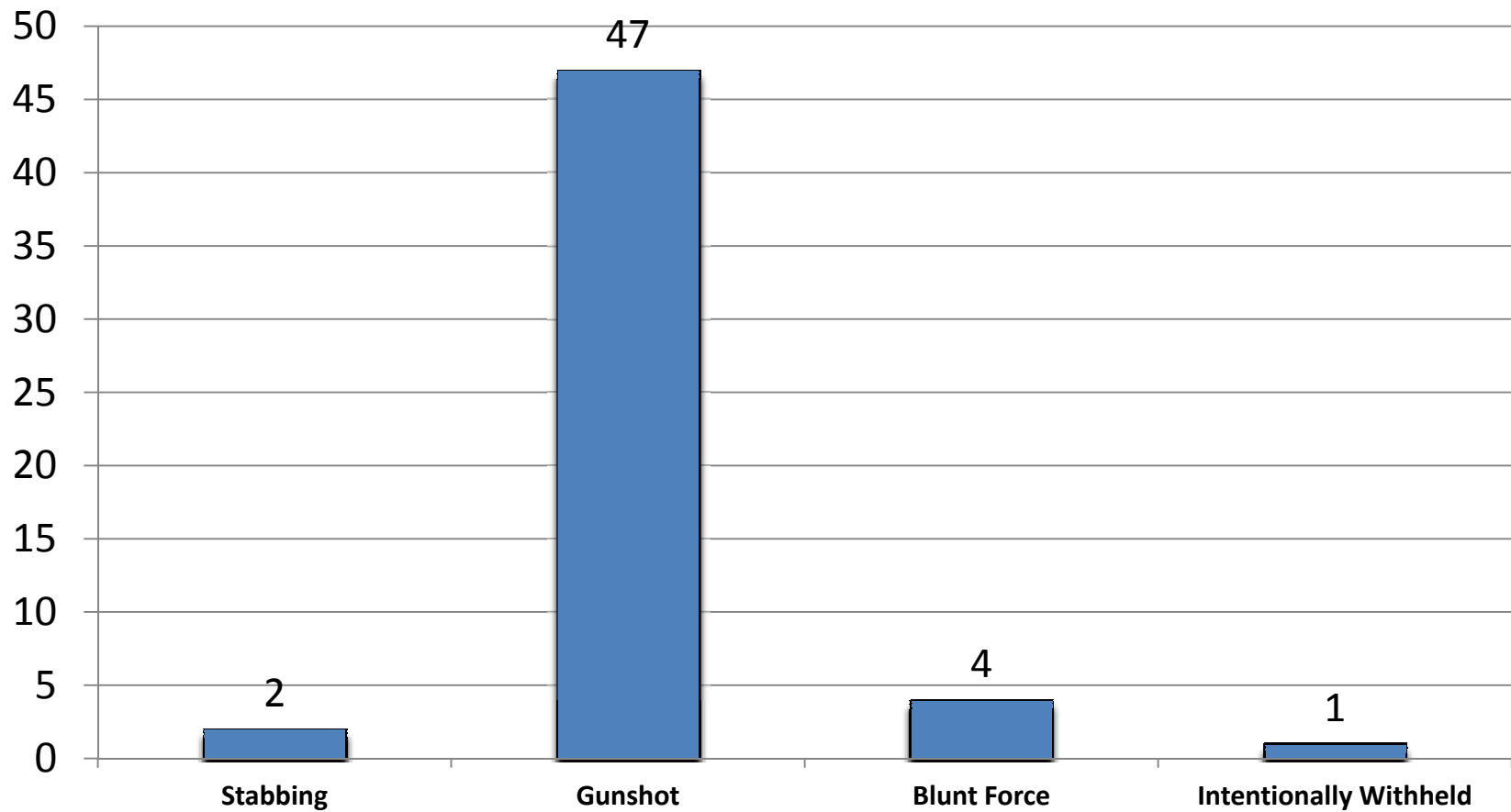
■ Family/Live-in - 2

■ Divorced - 1

\*There is not a 1-1 relationship between victims and suspects: Some cases report more than 1 suspect; others have no known suspects

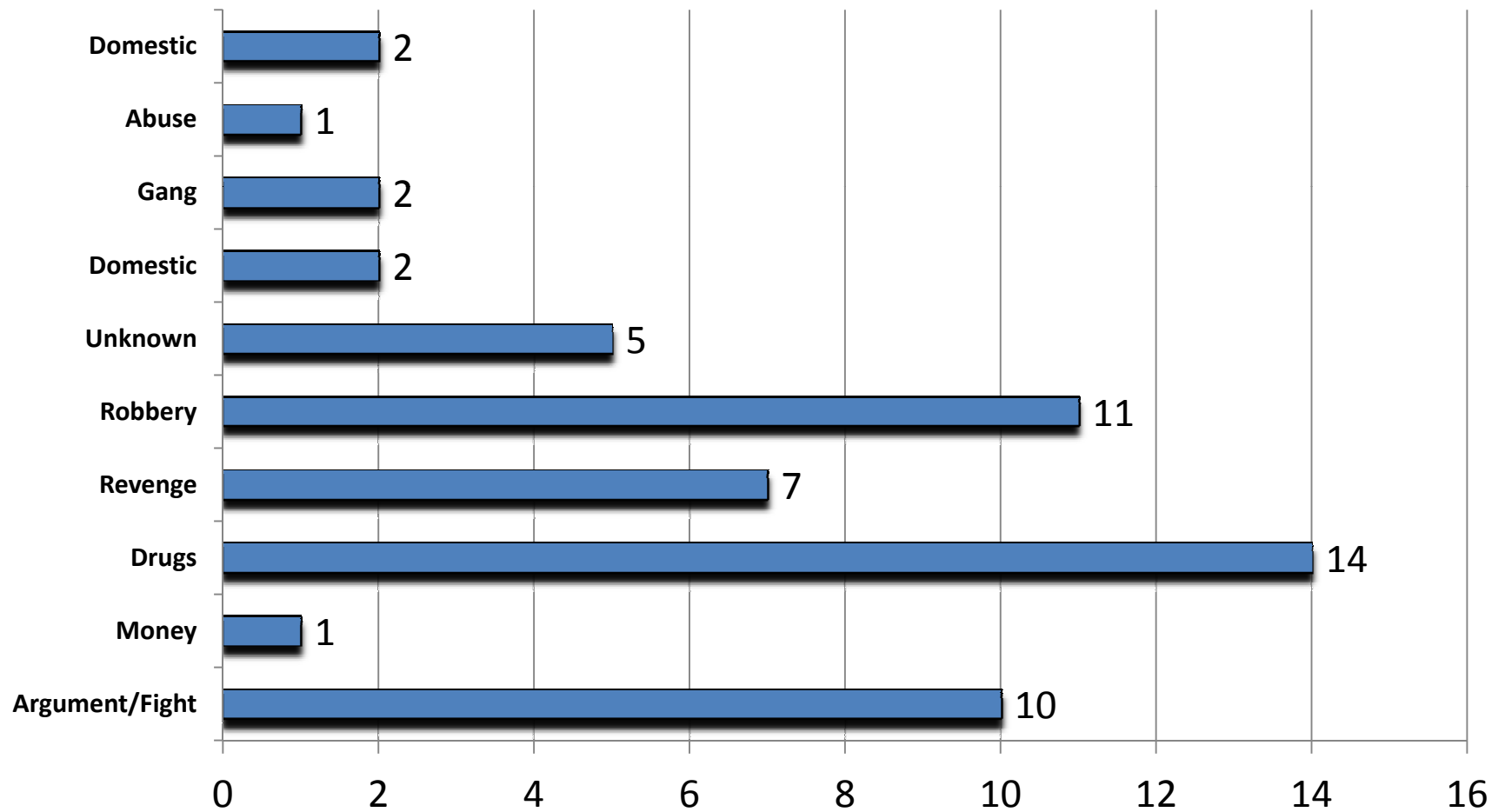
January 1 – May 11, 2014

**METHOD OF DEATH**



January 1 – May 11, 2014

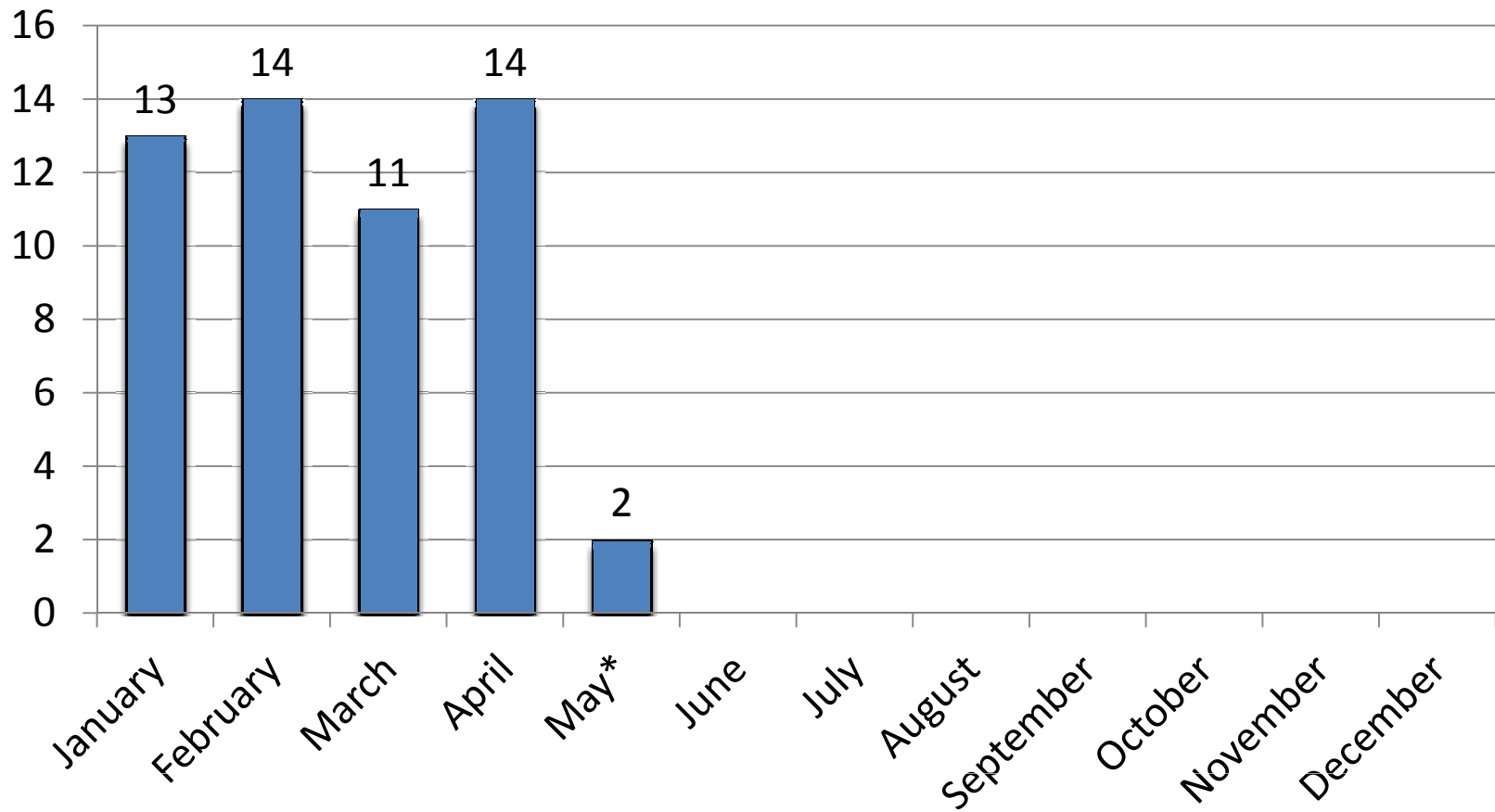
## MOTIVE



\* Domestic is determined based on the motive field and domestic check box.

January 1 – May 11, 2014

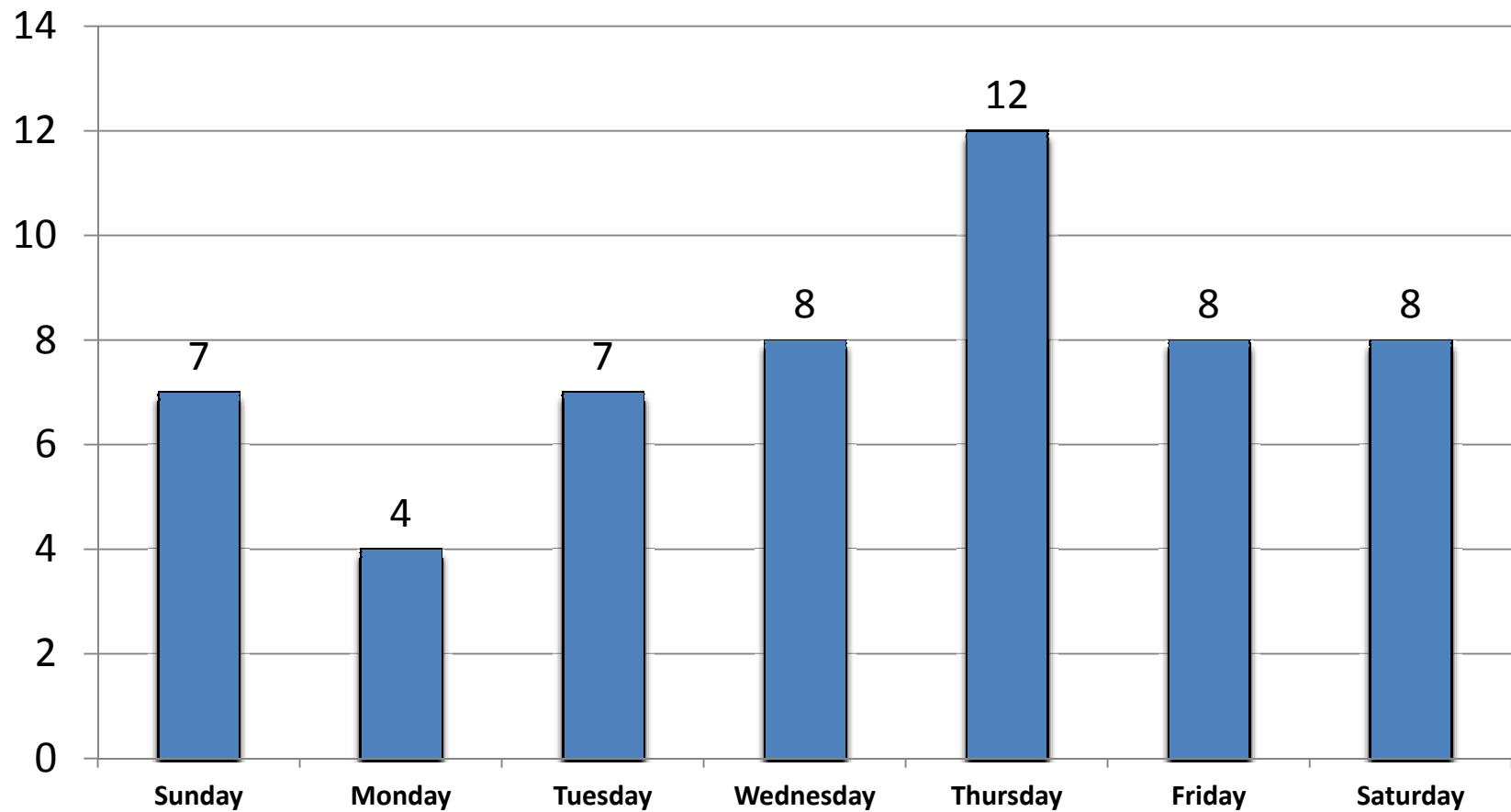
MONTH OF OCCURRENCE



\* is not a completed month therefore data are missing.

**January 1 – May 11, 2014**

**DAY OF THE WEEK**



January 1 – May 11, 2014

TIME OF THE DAY

