

DEPARTMENT OF PUBLIC SAFETY
INDIANAPOLIS METROPOLITAN POLICE DEPARTMENT

Criminal Homicide Analysis
January 1 – December 31, 2013

Prepared by IMPD, Crime Analysis Section
January 3, 2014

Data Source: HomiStat.mdb

*Criminal Homicides included in data are before UCR classification and the number could change pending UCR review.

Quick Facts: January 1- December 31, 2013

Murder Cases

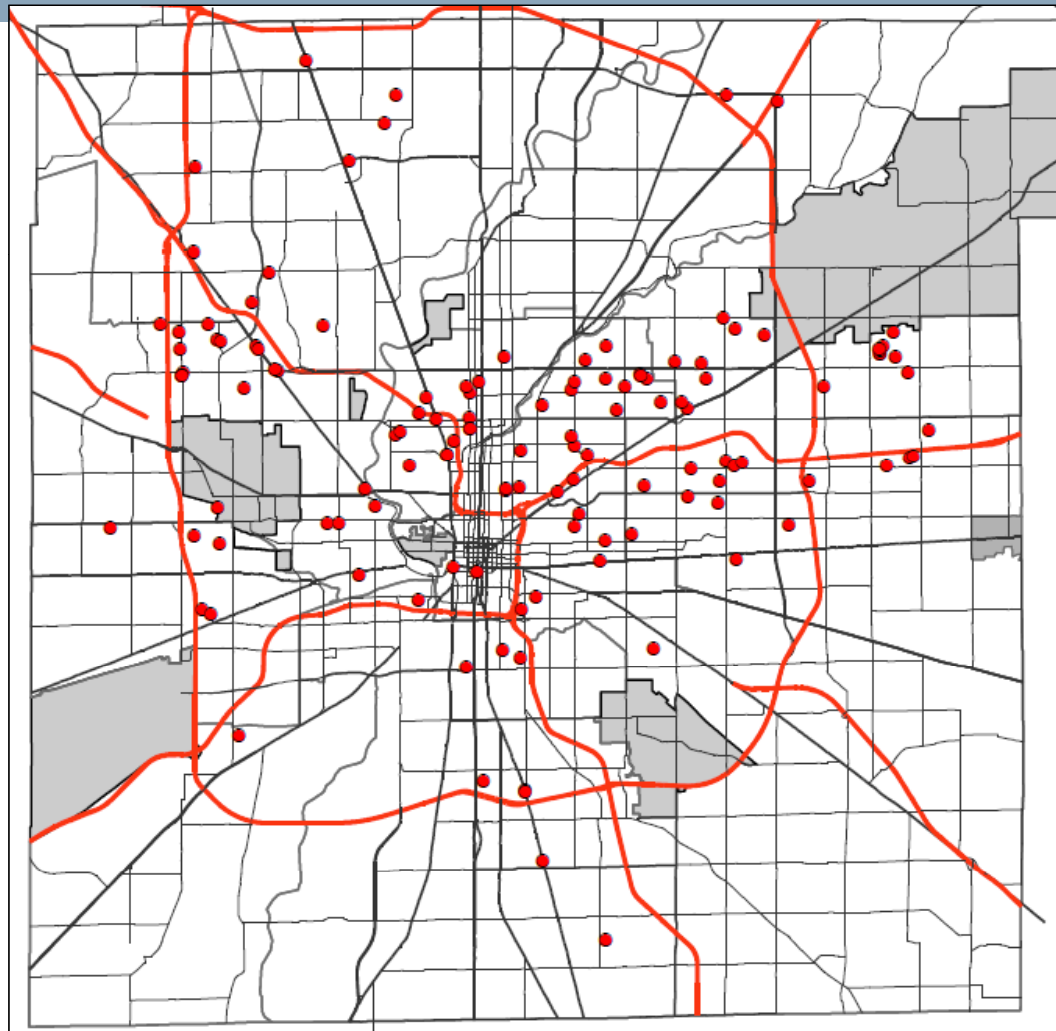
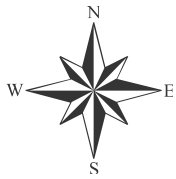
- Of the 125 murder victims, local adult criminal histories were found for 94 (75%) of the victims. These 94 people accounted for 301 adult felony arrests. Where criminal histories were found:
 - 39 (41%) had a previous weapons arrest
 - 58 (62%) had a previous drug arrest
 - 71 (76%) had a previous crimes against persons arrest
- Of the 95 suspects where a name was known, prior local adult criminal histories were found for 77 (82%) of the subjects. These 77 people accounted for 208 adult felony arrests:
 - 32 (42%) had a previous weapons arrest
 - 42 (55%) had a previous drug arrest
 - 59 (77%) had a previous crimes against persons arrest
- There have been three baby victims, ages 0 - 2 and four juvenile victims. **We've also had ten suspects under the age of 18.**

- The racial relationship between victims and their suspects was:*
 - Black victim – Black assailant = 71
 - White victim – Black assailant = 11
 - Black victim – White assailant = 3
 - White victim – White assailant = 11
 - Hispanic victim – Hispanic assailant = 0
 - Hispanic victim – White assailant = 0
 - Asian victim – Asian assailant = 0
 - Asian victim – Black assailant = 0
 - Indian victim – Unknown assailant = 0
 - Black victim – Unknown assailant = 34
 - Hispanic victim – Unknown assailant = 4
 - White victim- Unknown assailant = 5
- 52 (42%) of the 125 murders were known to have been motivated by drugs
- 50 of the victims of known drug-related murders died as the result of gunshot wounds

*There is not a 1-1 relationship between victims and suspects: Some cases report more than 1 suspect; others have no known suspects

January 1 – December 31, 2013

MAP OF INCIDENT LOCATION



0 0.5 1 Miles

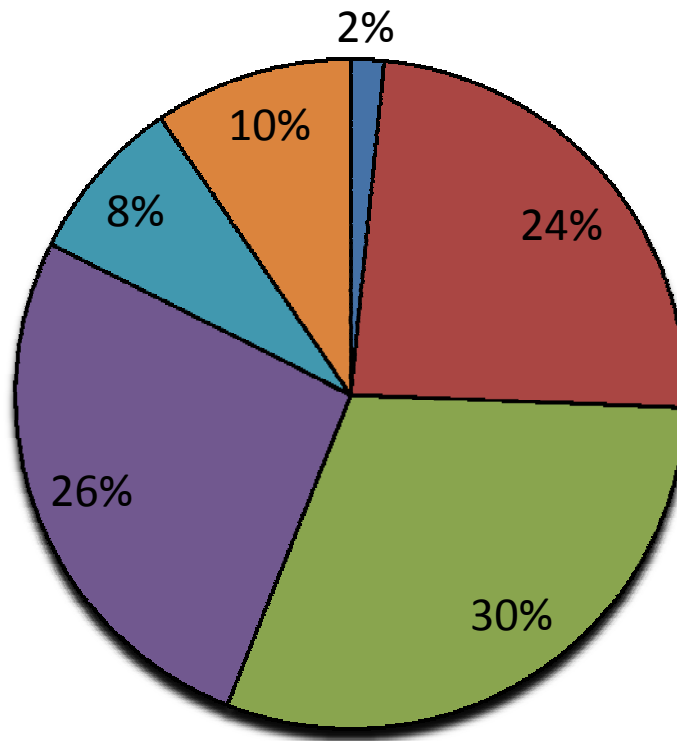
● CRIMINAL HOMICIDE

Data Source: HomiStat.mdb

*Criminal Homicides included in data are before UCR classification and the number could change pending UCR review.

January 1 – December 31, 2013

DISTRIBUTION BY DISTRICT



■ Downtown- 2

■ North- 30

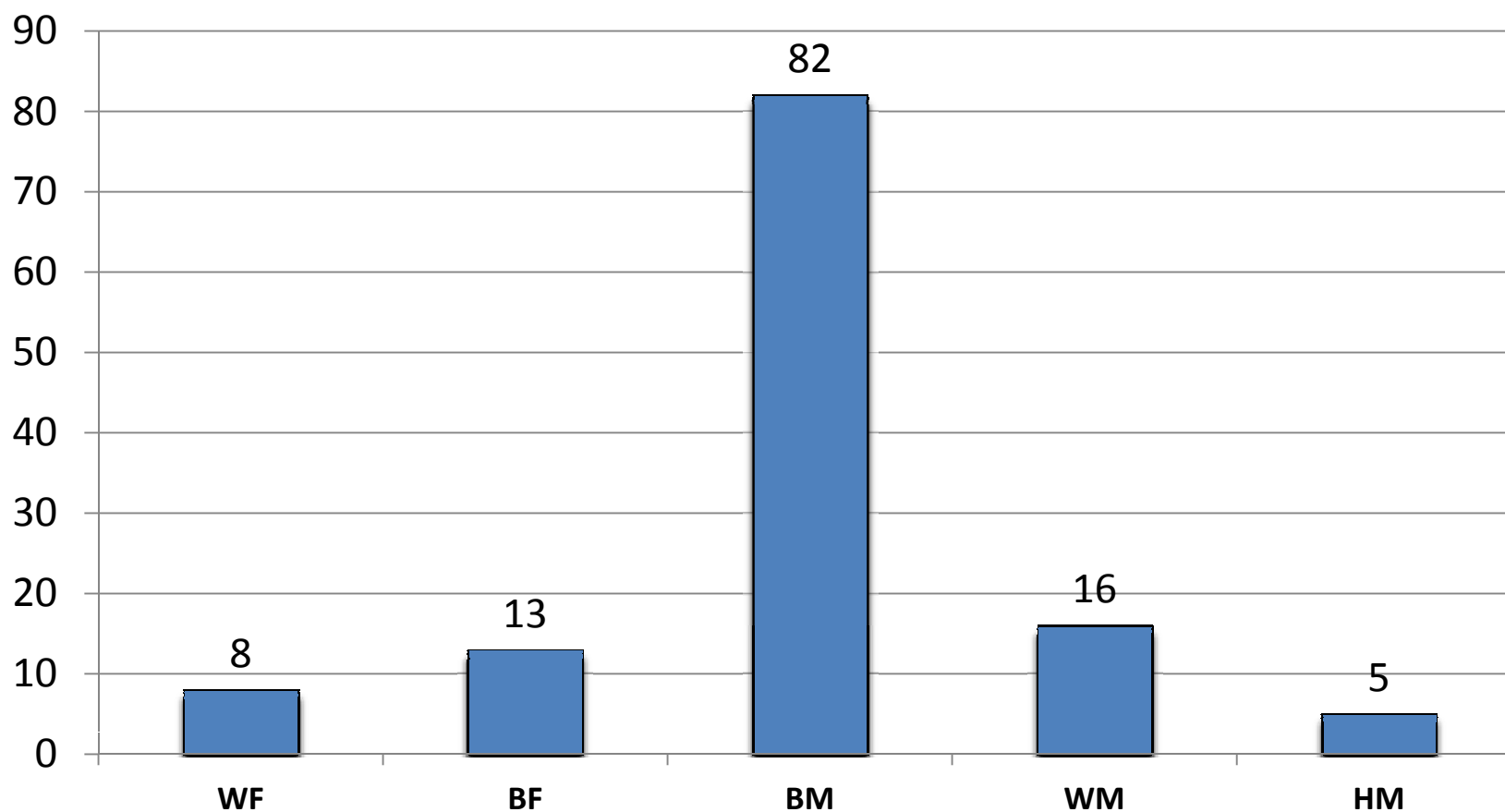
■ East- 38

■ Northwest- 33

■ Southeast- 10

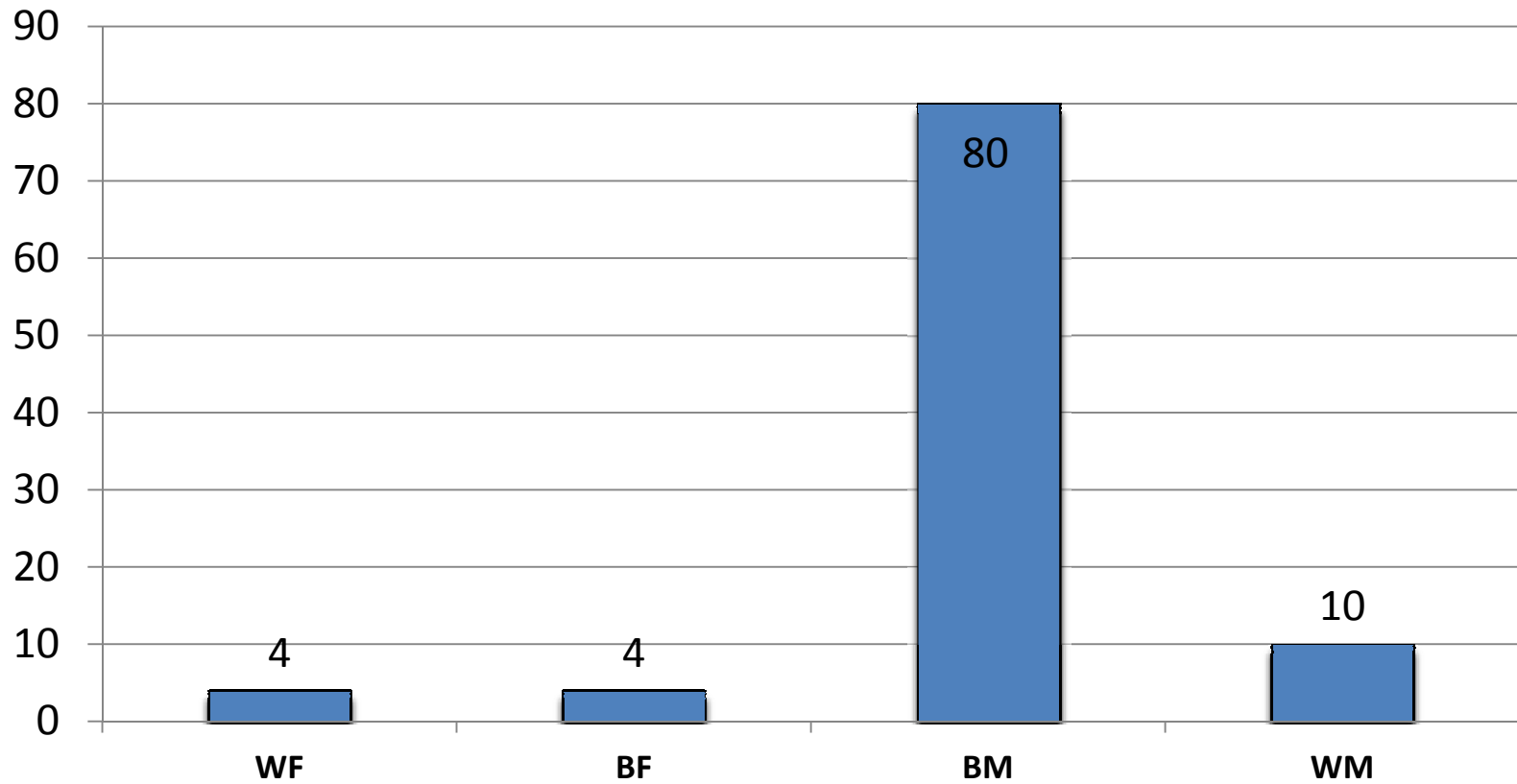
■ Southwest- 12

January 1 – December 31, 2013
VICTIM RACE/ETHNICITY AND GENDER



There is not a 1-1 relationship between victims and suspects: Some cases report more than 1 victim.

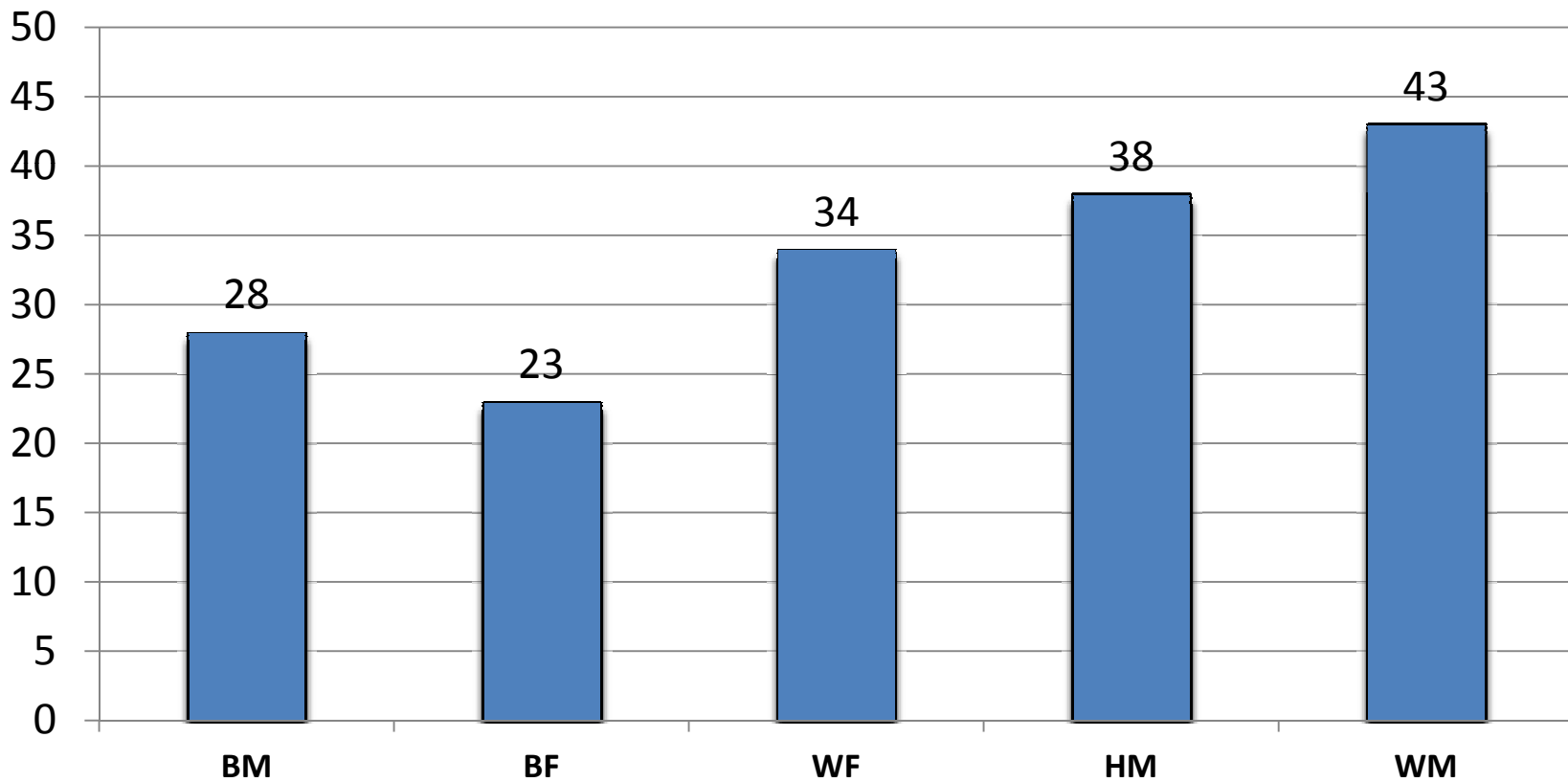
January 1 – December 31, 2013
SUSPECT RACE/ETHNICITY AND GENDER



There is not a 1-1 relationship between victims and suspects: Some cases report more than 1 suspect; others have no known suspects.

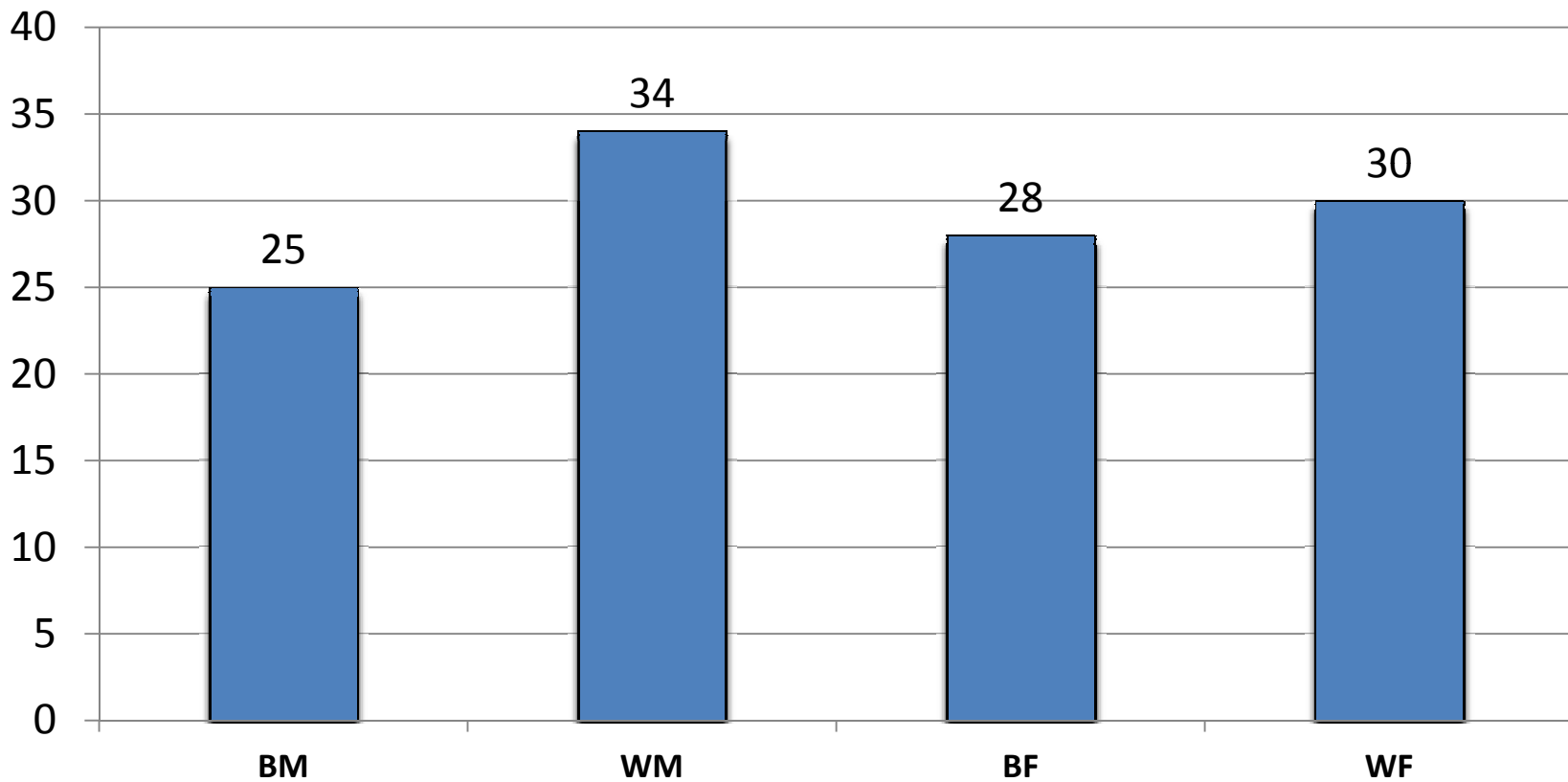
January 1 – December 31, 2013

AVERAGE VICTIM AGE BY RACE/ETHNICITY AND GENDER



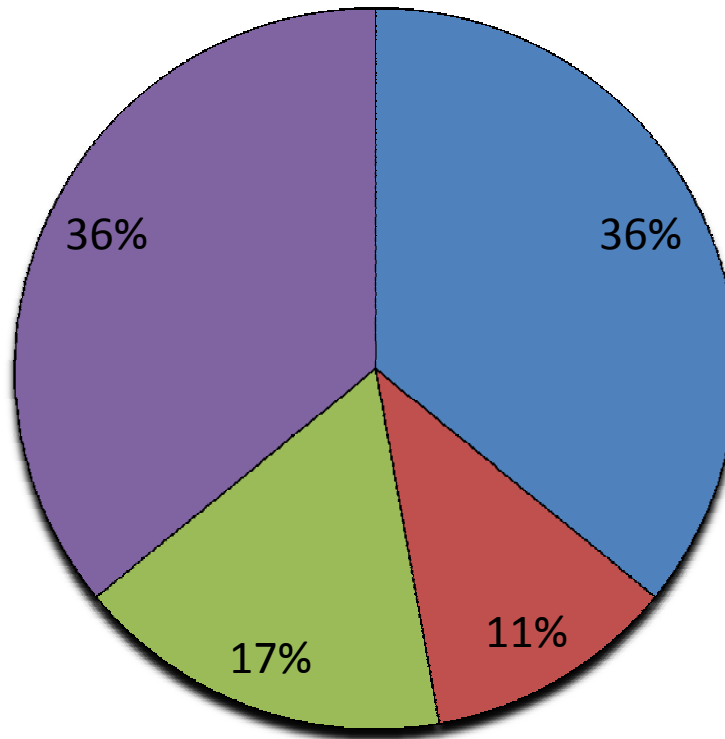
January 1 – December 31, 2013

AVERAGE SUSPECT AGE BY RACE/ETHNICITY AND GENDER



January 1 – December 31, 2013

VICTIM - SUSPECT RELATIONSHIP

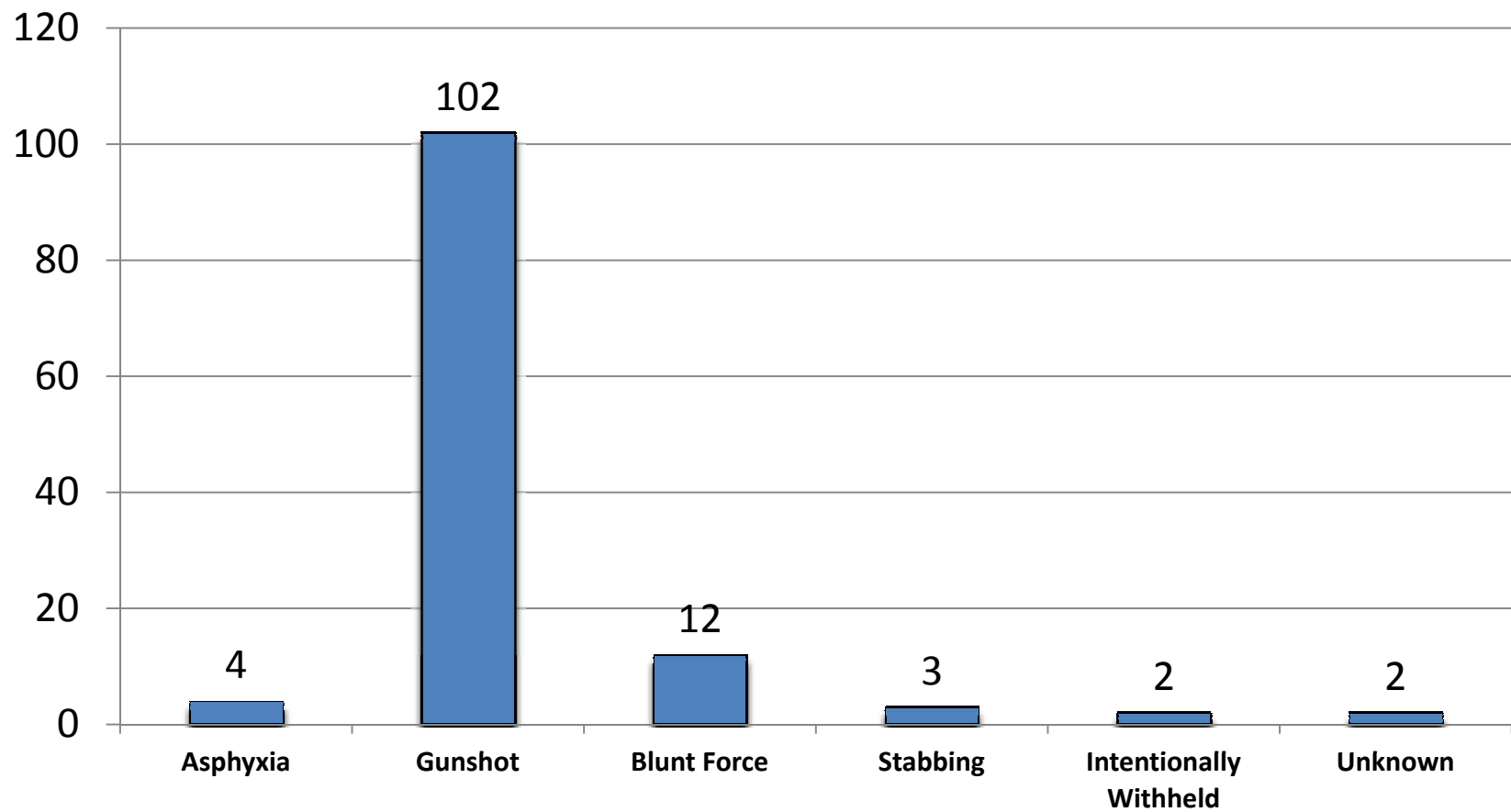


■ Acquaintance/Friend- 51 ■ Family/Live-In- 16 ■ Stranger- 24 ■ Unknown- 51

*There is not a 1-1 relationship between victims and suspects: Some cases report more than 1 suspect; others have no known suspects

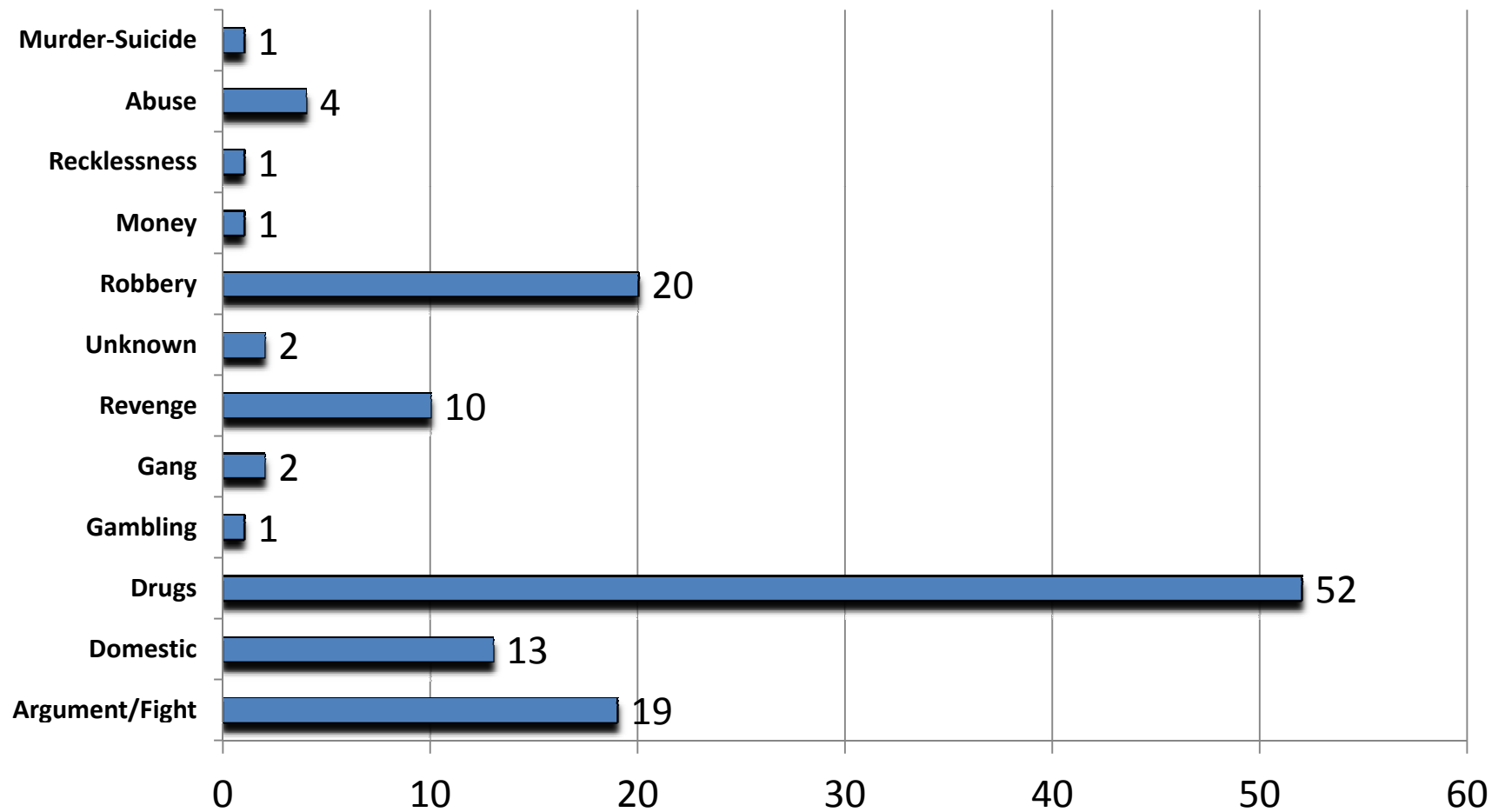
January 1 – December 31, 2013

METHOD OF DEATH



January 1 – December 31, 2013

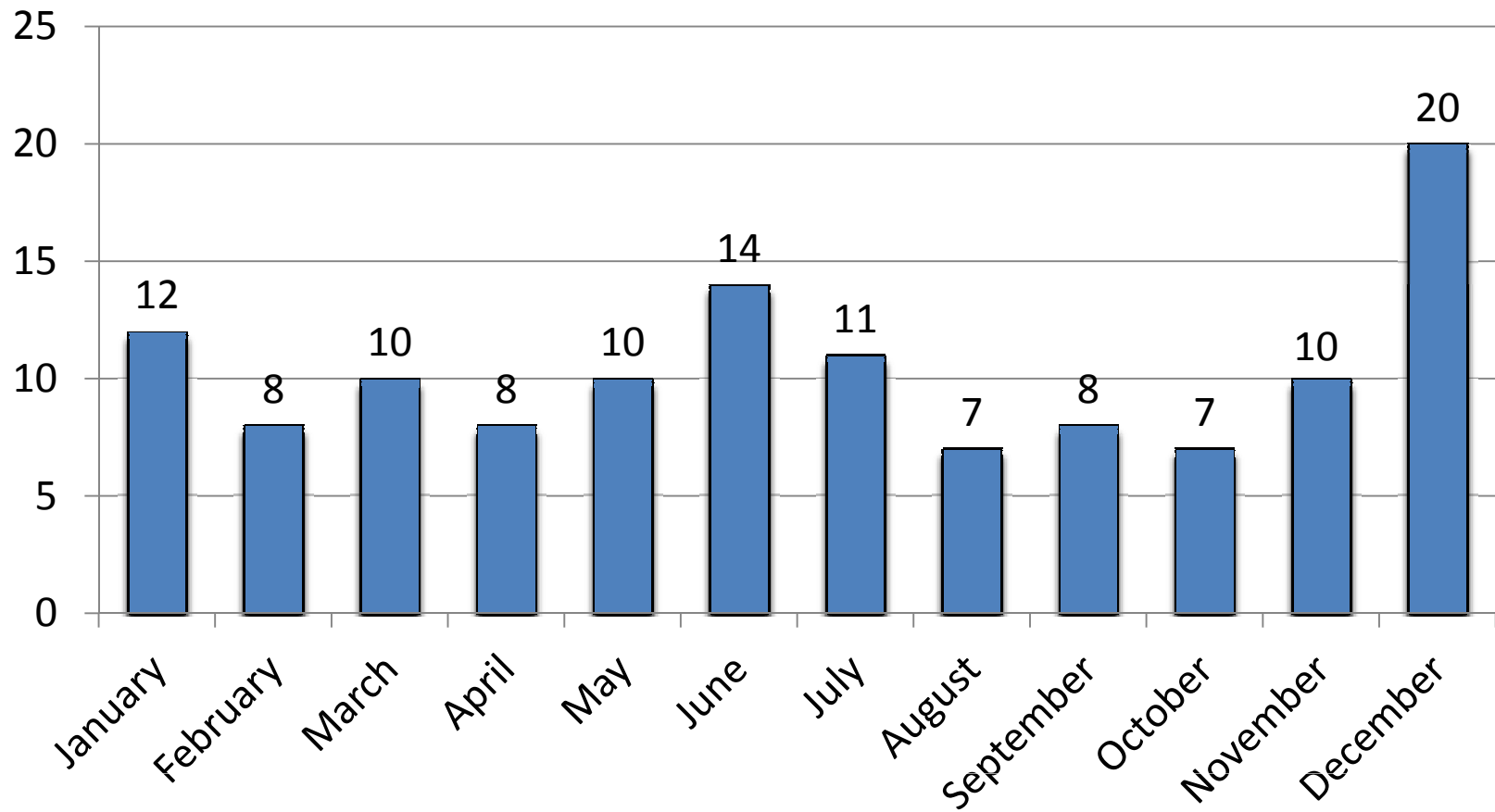
MOTIVE



* Domestic is determined based on the motive field and domestic check box.

January 1 – December 31, 2013

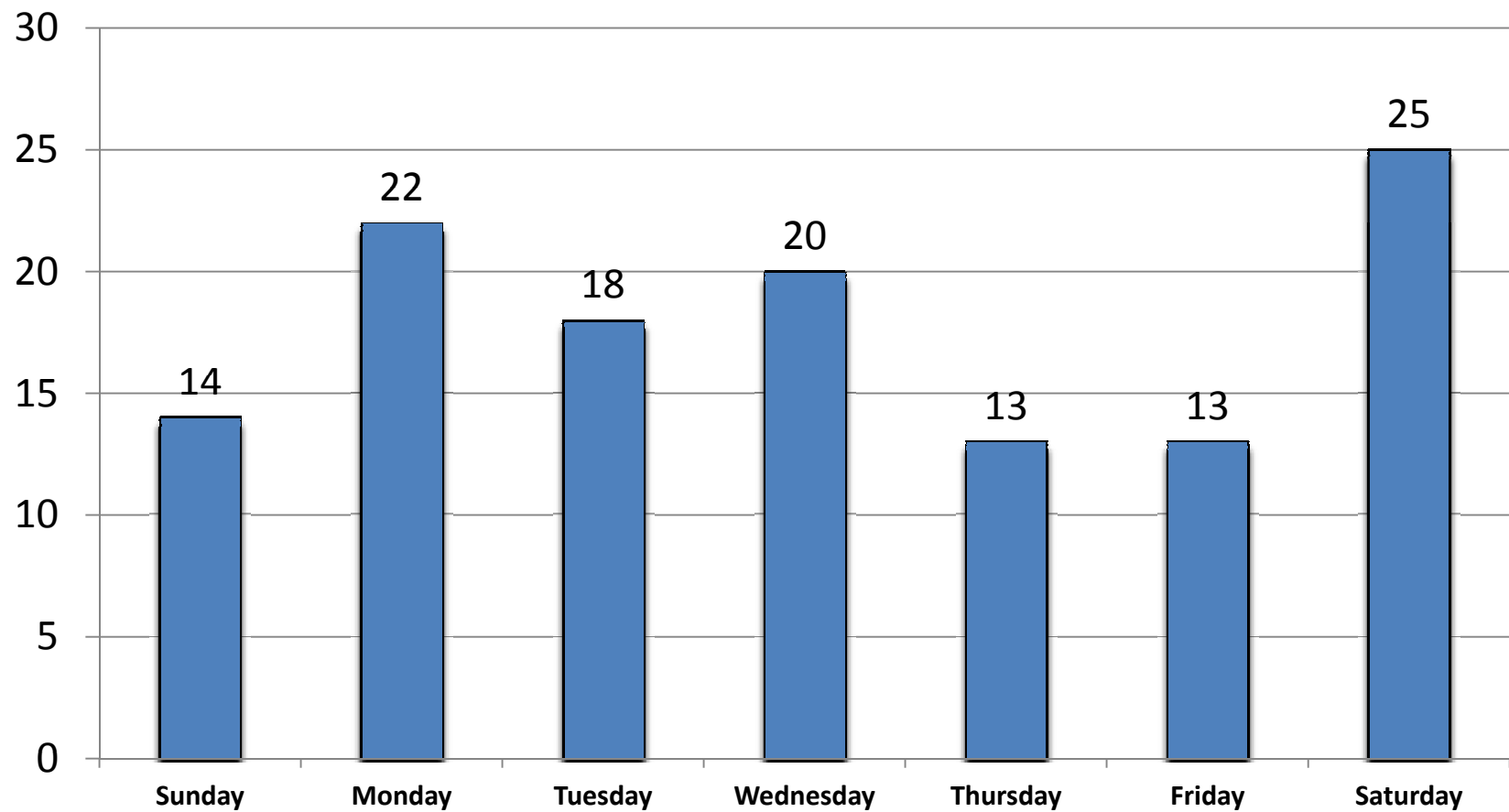
MONTH OF OCCURRENCE



* is not a completed month therefore data are missing.

January 1 – December 31, 2013

DAY OF THE WEEK



January 1 – December 31, 2013

TIME OF THE DAY

